

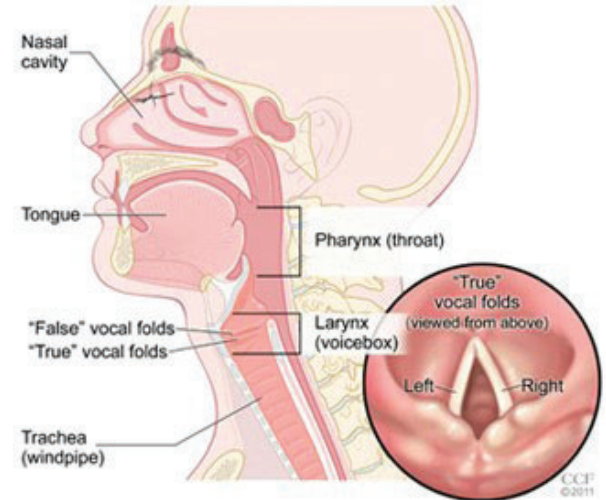


ENT Associates

Making sense of your family's
hearing, sinus and throat problems

Laryngopharyngeal Reflux (LPR)

Normally when we swallow, food and liquid travel down our esophagus (food tube) and enter the stomach through a valve that opens to allow food and liquid into the stomach for digestion by stomach acid. Sometimes the valve opens inappropriately and allows stomach acid to “back up” or reflux into the esophagus. When this happens, we may experience heartburn. However, other times, a small amount of acid may reflux all the way up into the voice box (larynx) or throat (pharynx). The larynx and pharynx are much more sensitive to injury from stomach acid than the esophagus. Although we can have both heartburn and LPR, they are separate conditions. Most people who have LPR do not have heartburn.



What are the symptoms of LPR?

- ◆ Hoarse or scratchy voice (either chronic or intermittent)
- ◆ Ear pain
- ◆ Post-nasal drip
- ◆ Frequent throat clearing
- ◆ Lump-in-the-throat sensation
- ◆ Thick phlegm in the throat
- ◆ Cough
- ◆ Sour or bitter taste in the mouth
- ◆ Difficult or painful swallowing

What can I do to help relieve my symptoms?

To relieve LPR symptoms consider the following:

Medication:

- ◆ If your doctor has prescribed medication, please *take it as prescribed*. Proton pump inhibitors work best when taken 30 to 60 minutes prior

to main meals to prepare the stomach before the food enters.

Diet Changes:

- ◆ *Increase intake of water* – increasing your intake of water will help to neutralize acid irritation
- ◆ *Limit your intake of caffeine* containing products including coffee, tea, soda, and chocolate. Caffeine has a drying effect on the lining of the stomach and provokes reflux
- ◆ *Limit your intake of alcohol* - alcohol, like caffeine, has a drying effect on the stomach
- ◆ *Reduce fat intake* – fatty or fried foods stay in the stomach longer and lead to more acid reflux
- ◆ *Avoid “trigger foods”* – you may already know which foods trigger indigestion...avoid them! Particular foods that are spicy or acidic (like tomatoes, citrus fruit, and fruit juice)

- ◆ *Eat less* – big meals put pressure on your stomach and create more acid
- ◆ *Reduce your weight, if needed* - Excessive weight puts pressure on the stomach and will contribute to heartburn and LPR

Lifestyle modifications:

- ◆ *Stop smoking*. Smoking is known to increase symptoms of LPR
- ◆ *Wait to lie down*. To keep acid from backing up, wait at least 3 hours before lying down after eating (this includes bedtime snacks!)
- ◆ *Avoid wearing tight clothes or tight belts* that may put pressure on your stomach
- ◆ *Raise the head of your bed* about 6 inches if you have nighttime symptoms of reflux

Clearwater

Office: 727-441-3588

1330 South Fort Harrison • Clearwater, FL 33756

Countryside

Office: 727-791-1368

3190 McMullen Booth Rd • Clearwater, FL 33761

Dunedin

Office: 727-450-0560

646 Virginia Street, 3rd Floor • Dunedin, FL 34698

Facial Aesthetics Center

Office: 727-446-FACE (3223)

1320 South Fort Harrison • Clearwater, FL 33756

Largo

Office: 727-397-8551

8787 Bryan Dairy Road, Suite 170 • Largo, FL 33777

Port Richey

Office: 727-819-0368

11031 US 19, Suite 104 • Port Richey, FL 34668

St. Petersburg

Office: 727-767-0933

6540 4th Street North, Suite C • St. Petersburg, FL 33702

Tampa

Office: 813-925-5000

8561 W. Linebaugh Avenue • Tampa, FL 33625

Trinity

Office: 727-247-1234

11320 State Road 54 • Trinity, FL 34655



ENT
Associates

Making sense of your family's
hearing, sinus and throat problems