



ENT

Associates

Making sense of your family's hearing, sinus and throat problems

Benign Paroxysmal Positional Vertigo

BPPV is the most common cause of vertigo. It occurs when crystals in the inner ear (otoliths or otoconia) break free in a certain part of the inner ear and float into or attach to the another part of the inner ear (the semicircular canal).

What are the symptoms of BPPV?

Symptoms include rapid attacks of vertigo with rapid head motion, usually to the affected side. These often occur when rolling in or out of bed or looking up. There is typically no pain and no loss of hearing.

What can cause BPPV?

Common causes for BPPV include:

- ◆ Common medical conditions (cardiovascular disease, diabetes, migraine)
- ◆ Mild head trauma
- ◆ Inner ear disorders (vestibular neuritis, labyrinthitis)

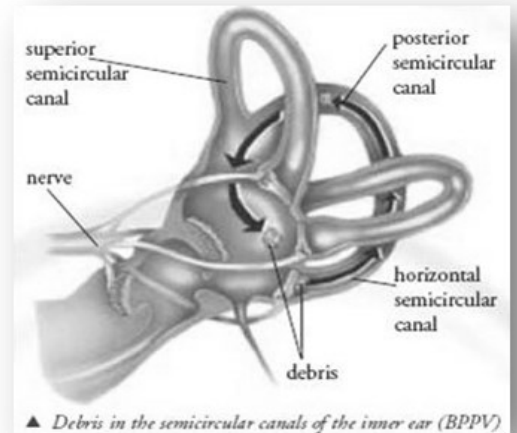
How is BPPV treated?

The most common treatment for BPPV are head repositioning maneuvers to return the otolith debris back to its original location in the inner ear. There are several different maneuvers and your doctor will choose the one that is most suitable.

The Epley maneuver is one the most commonly used treatments used for the condition. One treatment is effective in about 80% of BPPV cases, but

sometimes repeat maneuvers are necessary.

These can sometimes be done at home (see below) or your doctor may refer you to a balance center where the maneuver can be performed by a licensed hearing and balance specialist.



Clearwater

1330 South Fort Harrison
Clearwater, FL 33756

Facial Aesthetics Center

1320 South Fort Harrison
Clearwater, FL 33756

Spring Hill

120 Medical Blvd, Suite 105
Spring Hill, FL 34609

Tampa

10810 Sheldon Road
Tampa, FL 33626

Countryside

3190 McMullen Booth Road
Clearwater, FL 33761

Largo

8787 Bryan Dairy Road, Suite 170
Largo, FL 33777

St. Petersburg (4th)

6540 4th Street North, Suite C
St. Petersburg, FL 33702

Trinity

11320 State Road 54
Trinity, FL 34655

Dunedin

646 Virginia Street, 3rd Floor
Dunedin, FL 34698

Port Richey

11031 US 19, Suite 104
Port Richey, FL 34668

St. Petersburg (MLK)

501 Dr. MLK Jr. Street South
St. Petersburg, FL 33705